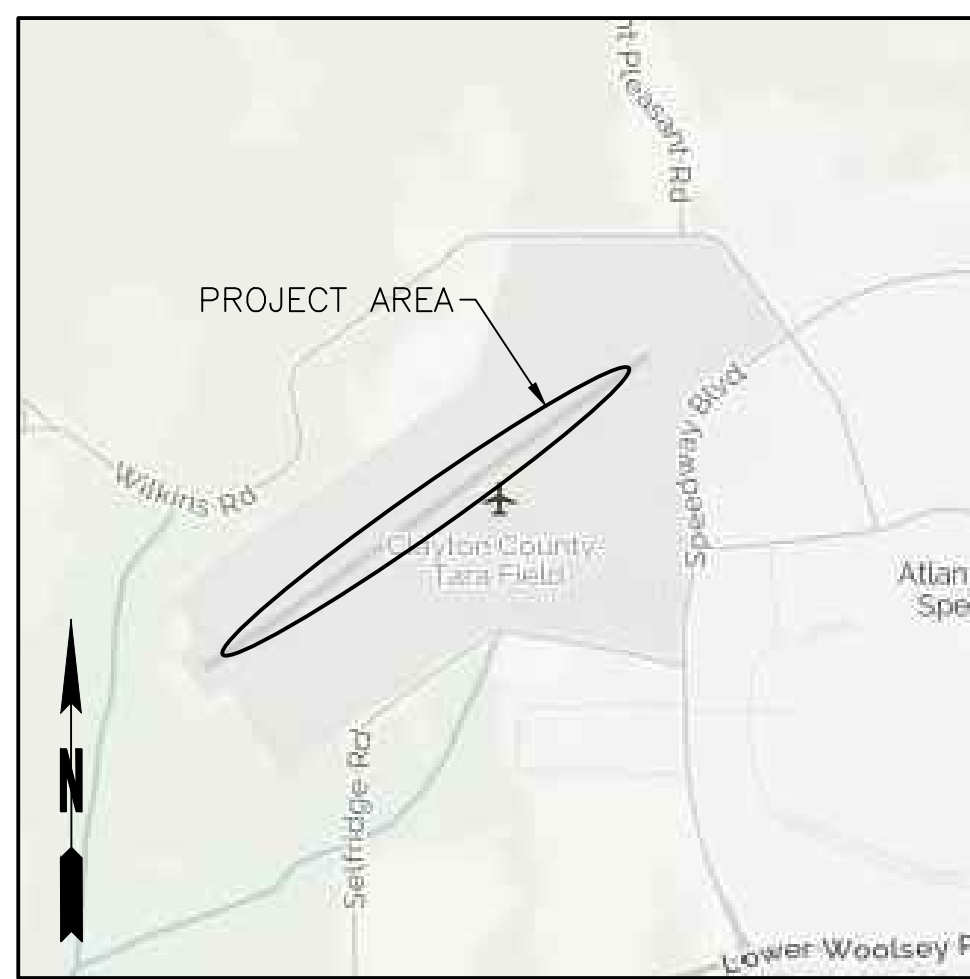


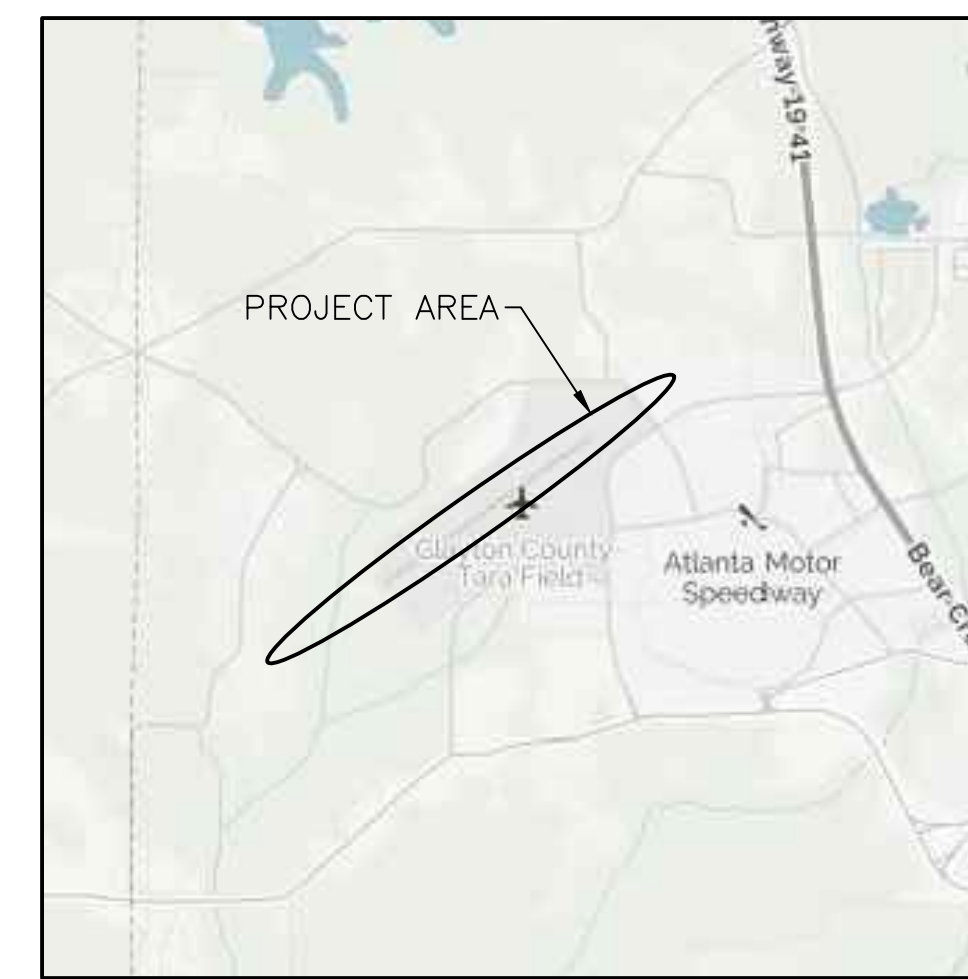
HENRY COUNTY AIRPORT

CONSTRUCTION OF TERMINAL AREA IMPROVEMENTS

HENRY COUNTY, GEORGIA



LOCATION MAP
1" = 2000'



VICINITY MAP
1" = 1 MILE

GDOT PROJECT NO. AP XXX-XXXX-XX (XXX) HENRY COUNTY
CROY ENGINEERING PROJECT NO. 1580.08
DECEMBER, 2018

SUMMARY OF QUANTITIES					
Item No.	FAA Item No.	Misc/ GDOT Item No.	Description	Approx. Qty	Unit
1	105		Mobilization	1	LS
2		163	Construct, Maintain and Remove Inlet Sediment Trap (Sd2-P: Pigs in a Blanket)	2	EA
3		163	Construct, Maintain and Remove Inlet Sediment Trap (Sd2-F: Filter Ring)	3	EA
4		171	Orange Construction Fence	105	LF
5	P-101-5.1		Transitional Milling	1,780	SY
6	P-151-4.1		Grubbing	1	AC
7	P-156-5.1		Temporary Seeding Complete	1	AC
8		210	Grading Complete	1	LS
9		411	Portland Concrete Sidewalk, 4" thick in Xmm, for Sidewalk, Concrete Strip, Dumpster Pad, and Staging Area	590	SY
10		438	Rollback Curb and Gutter, 24"	1,045	LF
11	P-209-5.1		Crushed Aggregate Base Course, including Bituminous Prime Coat, 8" Thick	2,875	SY
12	P-603-5.1		Bituminous Tack Coat	288	GAL
13		402	Recycled Asphaltic Concrete, 12.5mm, Superpave, 2" thick, GP 2 only, including Bituminous Materials and Hydrated Lime	1,680	TON
14		402	Recycled Asphaltic Concrete, 19mm, Superpave, 2" thick, GP 1 or 2, including Bituminous Materials and Hydrated Lime	320	TON
15		444	Sawcut, full depth	595	LF
16	P-605-5.1		Crack Seal Apron Pavement	25,000	LF
17	P-605-5.2		Crack Seal Parking Lot Pavement	25,000	LF
18	P-620-5.1		Runway and Taxiway Marking, Type II (Yellow), including Reflective Material (Type III, Gradation A) and Microbicide	825	SF
19	P-620-5.2		Parking Stall Marking, Type II (White), including Microbicide, 4" wide	400	SF
20		636	ADA Accessible Parking Stall Signs, including posts and installation	2	EA
21	F-162-5.1		Erect Chain Link Fence, 8' high, Black Vinyl Coated with 3 strands barbed wire	820	LF
22	F-162-5.2		Erect Chain Link Fence, 8' high, Black Vinyl Coated with 3 strands barbed wire, Screened, surrounding dumpster area and mechanical equipment	95	LF
23	F-162-5.3		Install 14' wide Motorized Sliding Gate, 6' high, Black Vinyl Coated Chain Link with 3 strands of barbed wire	1	EA
24	F-162-5.4		Install 3' wide Man Gate, 8' high, Black Vinyl Coated Chain Link with 3 strands of barbed wire and keypad entry	2	EA
25	F-162-5.5		Install 3' wide Man Gate, 8' high, Black Vinyl Coated Chain Link with 3 strands of barbed wire and keypad entry	1	EA
26	D-751-5.1		Pre-Cast Reinforced Concrete Drop Inlet, 4' dia., including Frame and Grate	1	EA
27	T-901-5.1		Permanent Seeding Complete	1	AC

28	T-904-5.1		Sodding	355	SY
29	T-908-5.1		Mulching	1	AC
30	C-100-5.1		Wheel Stops	15	EA
31	C-101-5.1		Aircraft Tie-Downs, per set	3	EA
32	L-103-5.1		Refurbish Airport Beacon Tower	1	EA
33			Refurbish Airport Viewing Tower, including Lead Abatement	1	EA
34	L-109-5.1		Refurbish Airport Electrical Vault	1	EA
35		610	Remove Existing FBO/Terminal Building, excluding asbestos abatement	1	LS
36		610	Remove Existing Chain Link Fence, all sizes and types	750	LF
37		610	Remove Existing Motorized Sliding Gate, including motor, bollards, electric pole, wiring and all appurtenances	1	LS
38		610	Remove Existing Pavement, full depth	3,055	SY
39		610	Remove 6" PVC Storm Pipe	18	LF
40		610	Remove Existing Drop Inlet	1	EA
41		610	Remove Underground Electrical Cable	1,333	LF
42		610	Remove Underground Telephone Cable	257	LF
43		610	Remove Existing Water Line and appurtenances	61	LF
44		610	Remove Airport Signs and Poles	18	EA
45		610	Remove Utility Pole	2	EA
			Install Flag Pole	1	EA
			Small Landscaping Shrub	7	EA
			Install Fire Hydrant	1	EA
46			Install Underground Telephone Cable (AT&T)	282	LF
47		682	Install Underground Electric Cable	286	LF
48			Install Underground Telephone Cable	292	LF
49			6" PVC Water Line	105	LF
50			6" PVC Sanitary Sewer Line	71	LF
51			Grease Trap, 1,500 Gallon	1	EA
52	L-108-5.1		Trench and Backfill for Direct Buried Cable, 18 inch minimum depth	860	LF
53		Division 10	Construct New Terminal Building, Complete	1	LS
54			Catering Kitchen Equipment Allowance @ \$25,000.00, excluding installation and/or delivery	1	LS
55			Cash Allowance @ \$75,000.00	1	LS
56			Fire Hydrant Complete incl. Materials, Installation, and Tap	1	EA



Know what's below.
Call before you dig.

24 HOUR CONTACT:
LYNN PLANCHON
TEL: 678-414-4603

Sheet Number	Sheet Title	
01	COVER	CV-01
02	CONSTRUCTION LAYOUT AND SAFETY PHASING PLAN	PL-01
03	EXISTING CONDITIONS AND DEMOLITION PLAN (SITE WORK)	DP-01
04	EXISTING CONDITIONS AND DEMOLITION PLAN (UTILITY WORK)	DP-02
05	PROPOSED UTILITY PLAN	UP-01
06	GRADING AND DRAINAGE, AND FENCING PLAN	GP-01
07	OVERLAY AND PAVING PLAN	GP-02
08	TYPICAL SECTION AND PAVING DETAILS	TS-01
09	MARKING, STRIPING, AND SIGNAGE PLAN	MP-01
10	MARKING, STRIPING, & CONSTRUCTION DETAILS	MD-01
11	FENCING DETAILS	FD-01
12	LANDSCAPING DETAILS	LD-01
13	EROSION AND SEDIMENT CONTROL PLAN COVER	EC-01
14	EROSION AND SEDIMENT CONTROL PLAN NOTES	EC-02
15	EROSION AND SEDIMENT CONTROL PRE-DEMO PLAN	EC-03
16	EROSION AND SEDIMENT CONTROL POST-DEMO PLAN	EC-04
17	EROSION AND SEDIMENT CONTROL PLAN DETAILS	EC-05
18	COVER AND INDEX OF SHEETS	G001
19	REGULATORY SUMMARY AND GENERAL NOTES	G002
20	LIFE SAFETY EGRESS PLAN	G003
21	CODE ANALYSIS	G004
22	GENERAL NOTES	S001
23	GENERAL NOTES	S002
24	GENERAL SCHEDULES	S003
25	GENERAL DIAGRAMS	S004
26	FOUNDATION PLAN	S101
27	LOW ROOF FRAMING PLAN	S102
28	HIGH ROOF FRAMING PLAN	S103
29	FRAME ELEVATIONS	S201
30	ROOF TRUSS PROFILES	S401
31	FRAMING SECTIONS	S402
32	FRAMING SECTIONS	S403
33	TYPICAL DETAILS	S501
34	TYPICAL DETAILS	S502
35	ARCHITECTURAL NOTES AND ABBREVIATIONS	A001
36	ARCHITECTURAL SYMBOLS & WALL TYPES	A002
37	FLOOR PLAN	A101
38	CLERESTORY PLAN	A102
39	REFLECTED CEILING PLAN	A103
40	ROOF PLAN	A104
41	FINISH PLAN	A105
42	NORTH & SOUTH BUILDING ELEVATIONS	A201

Sheet Number	Sheet Title	
43	EAST & WEST BUILDING ELEVATIONS	A202
44	GENERAL BUILDING SECTIONS	A301
45	WALL SECTIONS	A401
46	WALL SECTIONS	A402
47	WALL SECTIONS	A403
48	WALL SECTIONS	A404
49	WALL SECTIONS	A405
50	WALL SECTIONS	A406
51	WALL SECTIONS	A407
52	EXTERIOR DETAILS - FOUNDATIONS	A501
53	EXTERIOR DETAILS - WALLS	A511
54	EXTERIOR DETAILS - ROOF	A521
55	EXTERIOR DETAILS - ROOF	A522
56	EXTERIOR DETAILS - ROOF	A523
57	INTERIOR DETAILS - ENLARGED TOILET PLAN & ELEVATIONS	A541
58	INTERIOR DETAILS - CASEWORK AND SECTIONS	A551
59	INTERIOR DETAILS - INTERIOR ELEVATIONS	A561
60	DOOR SCHEDULE	A601
61	EXTERIOR 3D VIEWS	A701
62	PLUMBING LEGEND NOTES AND ABBREVIATIONS	P0.01
63	PLUMBING SCHEDULES	P0.02
64	PLUMBING DETAILS	P0.03
65	PLUMBING UNDERGROUND PIPING	P1.01
66	PLUMBING SANITARY AND VENT PIPING	P1.02
67	PLUMBING DOMESTIC WATER PIPING	P1.03
68	PLUMBING ENLARGED PLANS	P2.01
69	PLUMBING RISER DIAGRAMS	P3.01
70	PLUMBING RISER DIAGRAMS	P3.02
71	MECHANICAL LEGEND NOTES AND ABBREVIATIONS	M0.01
72	MECHANICAL SCHEDULES	M0.02
73	MECHANICAL DETAILS	M0.03
74	MECHANICAL DETAILS	M0.04
75	MECHANICAL FLOOR PLAN	M1.01
76	MECHANICAL PLAN - PIPING	M1.02
77	ELECTRICAL LEGEND, NOTES AND ABBREVIATION	E0.01
78	ELECTRICAL ONE LINE AND DETAILS	E0.02
79	ELECTRICAL PANEL SCHEDULES	E0.03
80	MECHANICAL CONNECTION SCHEDULE	E0.04
81	MAIN FLOOR POWER PLAN	E1.01
82	MAIN FLOOR LIGHTING PLAN	E2.01

Engineers
Planners
Surveyors

CROY ENGINEERING

200 NORTH COBB PARKWAY, BLDG. 400, SUITE 413
MARIETTA, GA 30062
PHONE: (770) 971-5407 FAX: (770) 971-0620

For Site Design only. Printed By: Taylor Payne on 12/27/2018, 11:41 AM

HENRY COUNTY AIRPORT

TERMINAL AREA IMPROVEMENTS

HENRY COUNTY, HENRY COUNTY, GEORGIA

NOT ISSUED FOR CONSTRUCTION

NO.	REVISION REFERENCE	DATE
1	CHANGES PER ADDENDUM 4	12/07/18



SHEET TITLE
COVER

DRAWN BY
DGP

CHECKED BY
SVC

SCALE
NTS

ISSUE DATE
10/26/18

PROJECT NUMBER
1580.08

DRAWING NUMBER
CV-01

SHEET 01 of 82

1580.08 - Terminal Area Improvements Engineering/Design/1580.08_COVER.dwg