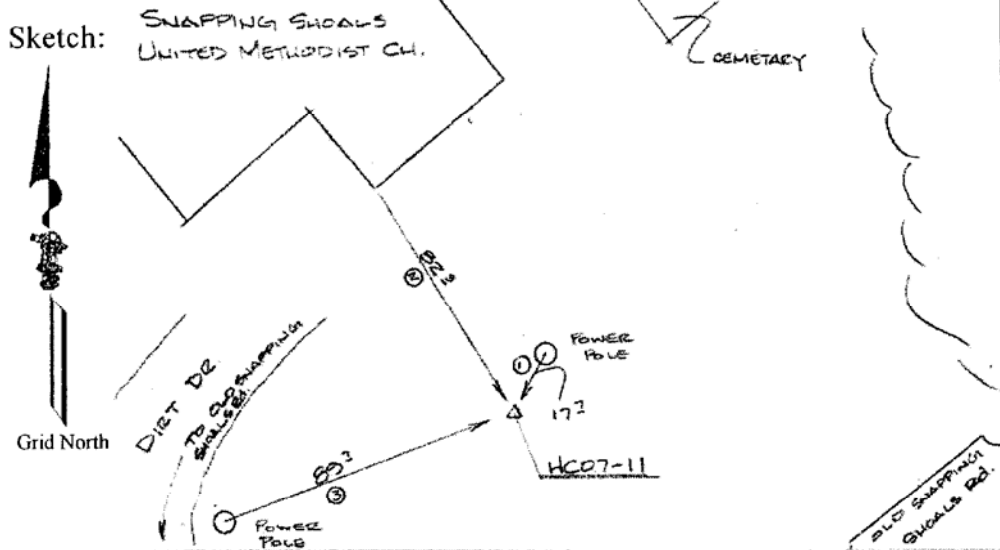


Proj. No.: 5908-002 State: GA County: HENRY Station: HC07-11

Year Established: 2007 Agency/Client: HENRY COUNTY

Type of Survey: GPS Accuracy Classification: THIRD Order, Class I



DESCRIPTION STATION IS EAST OF OLD SNAPPING SHOALS RD. AND ON THE GROUNDS OF SNAPPING SHOALS UNITED METHODIST CH.. REFERENCE MARK 1, 17.7 FEET FROM A POWER POLE. REFERENCE MARK 2, 82.9 FROM THE CORNER OF THE CHURCH BLDG. REFERENCE MARK 3, 89.7 FEET FROM A POWER POLE. STATION IS A 2 IN. ALUM. DISK STAMPED "HC07-11".

GEODETTIC POSITION

Latitude: 33° 28' 46.193289" N Longitude: 84° 57' 11.741903" W
 WGS84 () CLARK1866 ()
 GRS80 (X)
 Orthometric Height: 193.295 M. 634.169 Ft. Geoid Hgt.: -28.766 M.
 1988 NAVD (X) Geoid Model 03
 1929 NGVD ()

STATE PLANE POSITION

State: GA Zone: WEST Zone #: 1002 Projection: TM
 NAD83 (X) Adj. (COR96) 1927NAD ()

N: 1265735.557 US Ft (X) E: 2361651.595 US Ft (X)
 Int Ft. () Int Ft. ()
 N: 385796.969 M. E: 719832.846 M.

Combined Scale Factor: 0.99987902 Convergence: 0 07 03.802