



GENERAL NOTES:

- ALL LOW VOLTAGE CABLES, CAT 5, CAT 6 AND TV CABLE, WILL BE INSTALLED BY OTHERS.
- NOT USED.
- NOMENCLATURE INDICATES: 2 DATA JACKS AND CAT 6, CABLES, UNO.
- ALL SYSTEMS SHALL BE INSTALLED, CONNECTED AND LABELED, PER OWNER, TO PROVIDE COMPLETE OPERATING SYSTEMS. COORDINATE LOCATION OF "IT" EQUIPMENT WITH HENRY COUNTY INFORMATION SERVICES, CLARK RAINER, 770-288-6841.
- REFER TO DRAWING M7 FOR ADDITIONAL INFORMATION PERTAINING TO THE AIR HAWK, DIESEL EXHAUST SYSTEM.

REVISIONS	DESCRIPTION	DATE

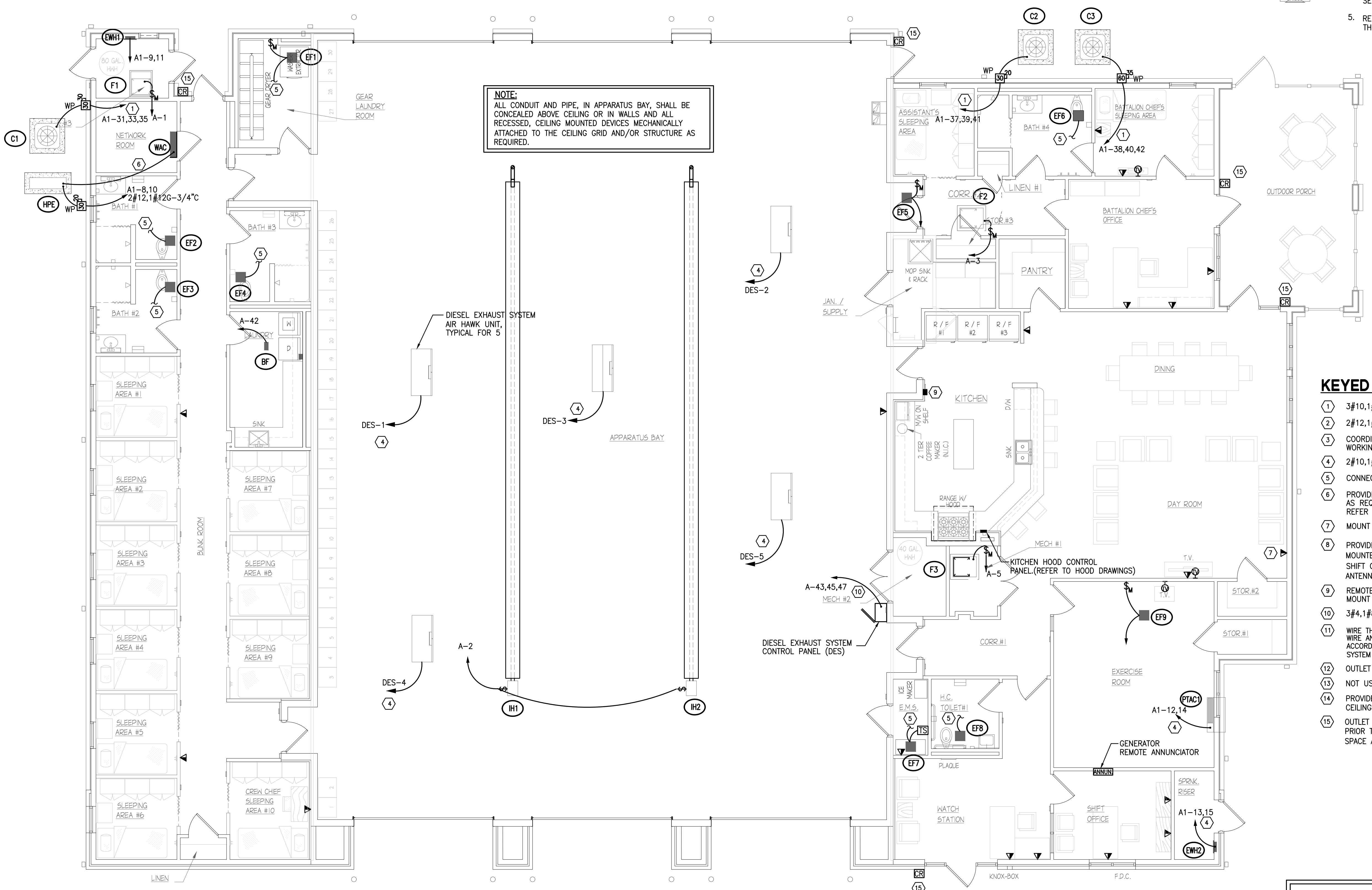
Copyright © 2015 by Marshall & Bollwerk Engineering, Inc. All rights reserved. No part of this document may be reproduced without the prior written permission of the copyright owner.

HOWELL Group Inc.
Architects • Planners • Interior Designers
965 Piedmont Road, NE • Suite 100 • Marietta, Georgia 30068
Tel.: (770) 394-5611 • Fax: (770) 394-5612

NEW CONSTRUCTION
HENRY COUNTY FIRE STATION # 15
325 NORTH MT. CARMEL ROAD, HAMPTON, GA 30228

DATE: NOVEMBER 1, 2015
COMM. NO.: -
DWN: ACM CK: ACM
SCALE: AS SHOWN

HVAC POWER & SIGNAL-FLOOR PLAN
SHEET NUMBER
E-6
OF



NOTE:
ALL CONDUIT AND PIPE, IN APPARATUS BAY, SHALL BE CONCEALED ABOVE CEILING OR IN WALLS AND ALL RECESSED, CEILING MOUNTED DEVICES MECHANICALLY ATTACHED TO THE CEILING GRID AND/OR STRUCTURE AS REQUIRED.

KEYED NOTES:

- 3#10,1#10G-1/2" C
- 2#12,1#12G-1/2" C
- COORDINATE PLACEMENT OF UNIT WITH MECHANICAL CONTRACTOR SO NEAR WORKING CLEARANCE FOR ELECTRICAL EQUIPMENT CAN BE MET, TYPICAL.
- 2#10,1#10G-1/2" C
- CONNECT TO ROOM LIGHTS.
- PROVIDE INTERCONNECTING WIRING BETWEEN UNITS AS REQUIRED BY MANUFACTURERS WIRING DIAGRAMS. REFER TO DRAWING M4.
- MOUNT 5' A.F.F.
- PROVIDE A 3" CONDUIT, FROM 3' ABOVE ROOF, TO A TWO GANG FLUSH MOUNTED OUTLET BOX ADJACENT TO DATA JACKS IN THE WATCH STATION/SHIFT OFFICE. PROVIDE A 180 DEGREE HOOK DOWNWARD IN CONDUIT FOR ANTENNA CABLES. COORDINATE LOCATION WITH OWNER PRIOR TO ROUGH-IN.
- REMOTE PULL STATION FOR ACTIVATING THE HOOD ANSUL SYSTEM. MOUNT 4'-6" A.F.F.
- 3#4,1#8G-11/4" C
- WIRE THROUGH HOOD CONTROL PANEL. WIRE ANSUL SYSTEM AND RELATED, REMOTE COMPONENTS IN ACCORDANCE WITH NFPA 96. COORDINATE LOCATION OF ANSUL SYSTEM CABINET WITH ARCHITECT AND MECHANICAL CONTRACTOR.
- OUTLET SHOWN ON E-4.
- NOT USED.
- PROVIDE 2-4"x30" GRN SPRIPLES THROUGH THIS WALL, ABOVE THE CEILING. EXACT LOCATION OF PENETRATIONS BY OWNER.
- OUTLET FOR CARD READER, MOUNT 48"A.F.F.. COORDINATE LOCATION WITH OWNER PRIOR TO ROUGH-IN. STUB 1" CONDUIT FROM OUTLET INTO ACCESSIBLE CEILING SPACE AND TERMINATE WITH INSULATED BUSHING.

NOTE:
REFER TO NOTE 11, ON E-1. OWNER WILL PROVIDE ALL RADIO, SOUND, A/V AND DATA SYSTEM EQUIPMENT AND INSTALLATION, THROUGH LOCAL VENDORS.

HVAC POWER & SIGNAL-FLOOR PLAN
SCALE: 3/16" = 1'-0"



Released for Construction