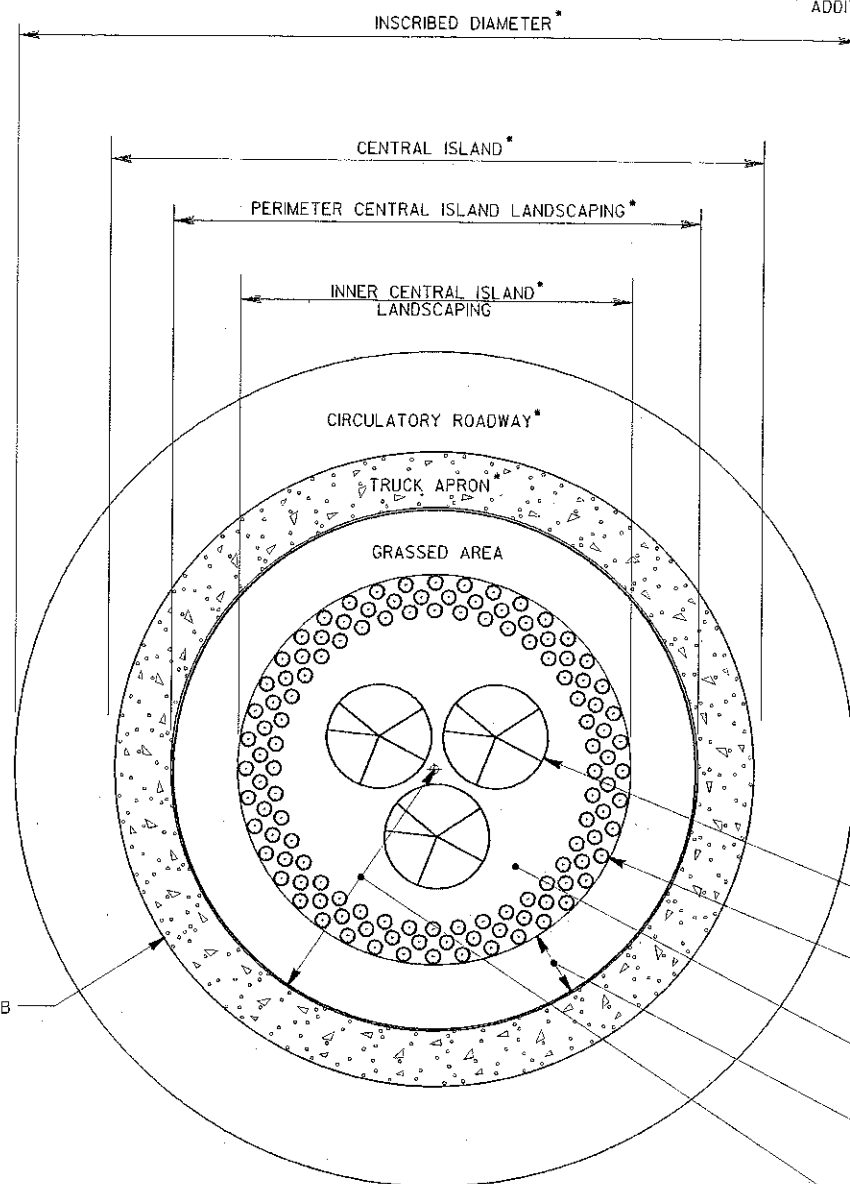
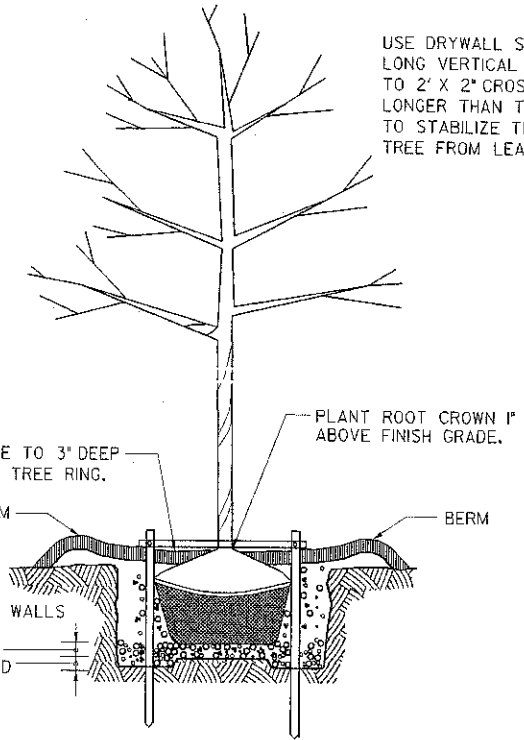


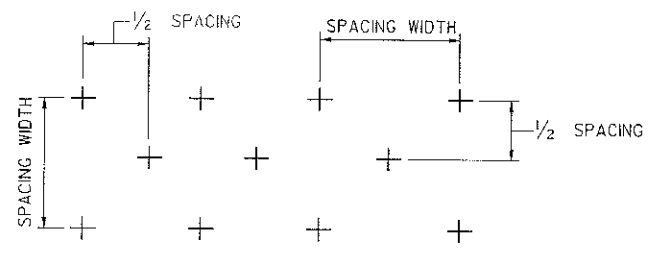
* SEE PLANS FOR DIMENSIONS AND ADDITIONAL DETAILS WHERE APPLICABLE.



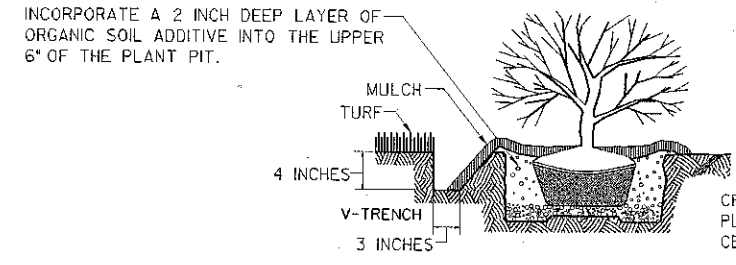
PLANTING LAYOUT
NO SCALE



TREE PLANTING DETAIL - ELEVATION
NO SCALE



ON CENTER SPACING - STAGGERED ROW
NO SCALE



VINE AND SHRUB PLANTING DETAIL
NO SCALE

GENERAL NOTES:

1. SPECIFICATIONS: GEORGIA STANDARD CURRENT EDITION, AND SUPPLEMENTS THERETO.
2. SEE SPECIAL PROVISIONS 700 AND 702 FOR PLANTING REQUIREMENTS.
3. SEE PLAN SHEETS FOR THE WIDTH OF THE PERIMETER CENTRAL ISLAND LANDSCAPING.
4. THE DESIGNER MAY SPECIFY ALTERNATE PLANT MATERIALS WITH PRIOR REVIEW AND APPROVAL BY THE OFFICE OF MAINTENANCE. IF ALTERNATE MATERIALS ARE SPECIFIED, THEY WILL BE DESCRIBED ELSEWHERE IN THE PLANS.
5. THIS DETAIL CAN BE INCORPORATED INTO PROJECT PLANS AFTER THE DEPARTMENT HAS ENTERED A SEPARATE RIGHT-OF-WAY MOWING AND MAINTENANCE AGREEMENT.

CONCRETE HEADER CURB

3 CRATAEGUS VIRIDIS 'WINTER KING'

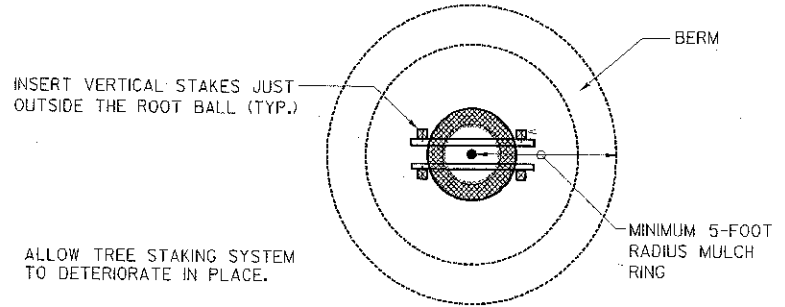
ILEX VOMITORIA NANA
3 GALLON, STAGGERED SPACING 3-FOOT ON CENTER
QUANTITY MAY VARY WITH THE SIZE OF THE ROUNDABOUT
LANDSCAPE ISLAND

MULCH ENTIRE INNER CENTRAL ISLAND BED WITH PINE STRAW MULCH

CYNODON DACTYLON 'TIFWAY 419' SOD

CROWN THE LANDSCAPED PART OF THE CENTRAL ISLAND AND GRADES WITH A MINIMUM 3% SLOPE, USING SOIL PREPARATION ACCORDING TO THE SPECIAL PROVISIONS SECTION 700 - GRASSING AND SECTION 702 - VINE, SHRUB AND TREE PLANTING.

ADJUST ANY WATER RESEVOIR BAG SO EMITTERS DO NOT REST ON STAKES OR CROSSBARS



TREE PLANTING DETAIL - PLAN
NO SCALE

ALLOW TREE STAKING SYSTEM TO DETERIORATE IN PLACE.

BASIS OF PAYMENT:

| PAY ITEM NUMBER | UNIT | PAY ITEM DESCRIPTION | BOTANICAL NAME | COMMON NAME | SIZE | SPACING |
|-----------------|------|-------------------------------|-----------------------------------|----------------------|----------------|------------------|
| 150-1000 | LS | TRAFFIC CONTROL | - | - | - | - |
| 700-9300 | SY | SOD | CYNODON DACTYLON 'TIFWAY 419' SOD | HYBRID BERMUDA GRASS | - | - |
| 702-0212 | EA | CRATAEGUS VIRIDIS | CRATAEGUS VIRIDIS 'WINTER KING' | WINTER KING HAWTHORN | 3 INCH CALIPER | SPACING AS SHOWN |
| 702-0470 | EA | ILEX VOMITORIA | ILEX VOMITORIA 'NANA' | DWARF YAUPON HOLLY | 3 GAL | SPACING AS SHOWN |
| 702-9005 | LB | SPRING APPLICATION FERTILIZER | SPRING FERTILIZER | FERTILIZER | - | - |
| 702-9025 | SY | LANDSCAPE MULCH | - | PINE STRAW MULCH | - | - |

| | | | |
|----------|--|--|----------------|
| DATE | | DEPARTMENT OF TRANSPORTATION STATE OF GEORGIA | |
| REVISION | | CONSTRUCTION DETAIL | |
| BY | | ROUNDABOUT LANDSCAPING DETAILS | |
| | | NO SCALE | SEPTEMBER 2011 |
| | | NUMBER RA-1 | |