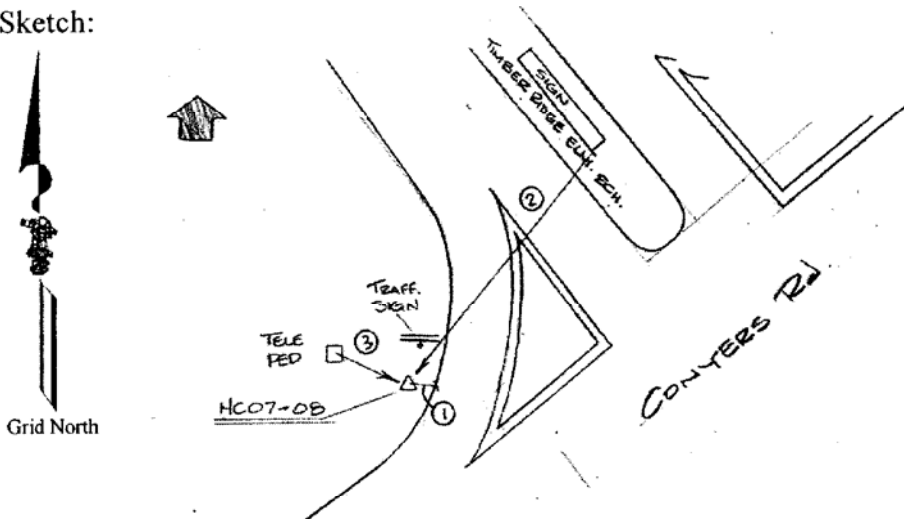


Proj. No.: 5908-002 State: GA County: HENRY Station: HC07-08

Year Established: 2007 Agency/Client: HENRY COUNTY

Type of Survey: GPS Accuracy Classification: THIRD Order, Class I

Sketch:



DESCRIPTION STATION IS AT THE INTRSX OF CONYERS RD. AND THE ENTRANCE TO TIMBER RIDGE

ELEM. SCH. AND THE SW RADIUS OF THE ENTRANCE. REFERENCE MARK 1, 7.7 FEET FROM EDGE OF

PAVEMENT. REFERENCE MARK 2, 69.1 FEET FROM THE SCHOOL SIGN. REFERENCE MARK 3, 16.4 FEET

FROM A TELE. PED. STATION IS A 2 IN. ALUM. DISK STAMPED "HC07-08".

GEODETIC POSITION

Latitude: 33° 30' 12.192844" N Longitude: 84° 04' 33.964328" W

WGS84 () CLARK1866 ()

GRS80 (X)

Orthometric Height: 233.921 M. 767.456 Ft. Geoid Hgt.: -28.944 M.

1988 NAVD (X)

Geoid

1929 NGVD ()

Model 03

STATE PLANE POSITION

State: GA Zone: WEST Zone #: 1002 Projection: TM

NAD83 (X) Adj. (COR96)

1927NAD ()

N: 1274372.716 US Ft (X) E: 2324189.595 US Ft. (X)

Int Ft. ()

Int Ft. ()

N: 388429.581 M. E: 708414.405 M.

Combined Scale Factor: 0.9998687

Convergence: 0 02 59.967