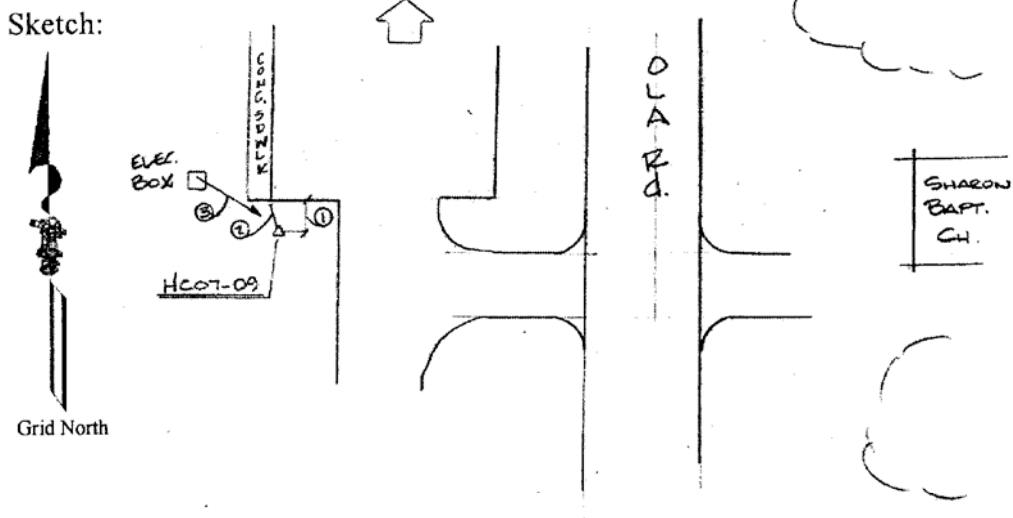


Proj. No.: 5908-002 State: GA County: HENRY Station: HC07-09

Year Established: 2007 Agency/Client: HENRY COUNTY

Type of Survey: GPS Accuracy Classification: THIRD Order, Class I

\*\*\*\*\*



\*\*\*\*\*

Description STATION IS IN A PARKING LOT WEST OF OLA RD AND SHARON BAPTIST CHURCH. REFERENCE MARK 1, 2.4 FEET FROM EDGE OF PAVEMENT. REFERENCE MARK 2, 2.9 FEET FROM THE CORNER OF SIDEWALK. REFERENCE MARK 3, 12.9 FEET FROM A ELECTRIC JUNC. BOX. STATION IS A 2 IN. ALUM. DISK STAMPED "HC07-09".

GEODETIC POSITION

Latitude: 33° 27' 01.690890" N Longitude: 84° 02' 30.968648" W  
 WGS84 ( ) CLARK1866 ( )  
 GRS80 (X)  
 Orthometric Height: 239.085 M. 784.397 Ft. Geoid Hgt.: -28.804 M.  
 1988 NAVD (X) Geoid  
 1929 NGVD ( ) Model 03

STATE PLANE POSITION

State: GA Zone: WEST Zone #: 1002 Projection: TM  
 NAD83 (X) Adj. (COR96) 1927NAD ( )

N: 1255129.54 US Ft. (X) E: 2334627.075 US Ft. (X)  
 Int Ft. ( ) Int Ft. ( )  
 N: 382564.249 M. E: 711595.756 M.

Combined Scale Factor: 0.99986865 Convergence: 0 04 07.514